

**Guidelines for Authors: Preparation of Abstracts – Sample Abstract**

**Abstract title here in sentence case (no unnecessary capitalization), no underlining and no full stop at the end**

Firstname A Lastname<sup>1\*</sup>, Firstname B Lastname<sup>2</sup>, Firstname C Lastname<sup>3</sup>

<sup>1</sup>Department, University, Town, State, Zipcode, USA

<sup>2</sup>University, Town, County, Postcode, UK

<sup>3</sup>Company, Town, State, Canada, Postcode

\*Email address of corresponding author if being included

Please keep to the abstract word count specified by your conference organizer.

Greek and other special characters may be included. SI units should be used throughout. Abbreviations should be used sparingly and should be defined when first used.

Citations to references should be included in square brackets [1,2], and citations to any figures (Figure 1) and tables (Table 1), must also be included in round brackets.

Structured headings such as Background, Results and Conclusions may be added.

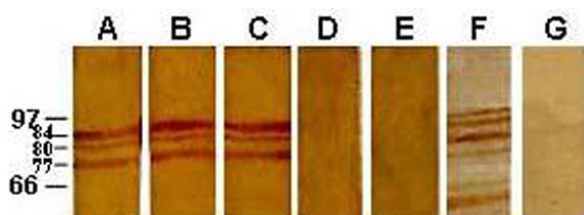
**Table 1.** Tables should be formatted using the "table function" in a word processing program, not created with tabs or submitted as an image or scan

	X <sup>a</sup>	Y	Z	p <sup>*</sup>
Parameter 1	≤9	10-12	≥13	0.01
Parameter 2 <sup>b</sup>	1.20	1.07	0.98	0.0001
Parameter 3	a	b	c	0.05

**Table 2.** This table contains at least 3 identifiable pieces of patient data, and therefore this abstract requires patient consent to publish, and a statement detailing so. Case six requires parental consent as the patient is under 16.

Patients	Age	Sex	Height (cm)	Weight (kg)
Case 1	59	F	150	85
Case 2	40	M	184	92
Case 3	30	F	156	52
Case 4	68	M	180	81
Case 5	90	M	168	75
Case 6	14	F	165	64

**Figure 1.** Figure titles and legend must form part of the text file and not be part of the image. Figures must be supplied electronically in the body of the text at 300 dpi minimum. Each figure (even if made up of parts) must be inserted as a single, composite file.



**Trial registration:**Current Controlled Trials ISCRTN73824458

**Ethics Approval**

If the abstract discusses studies involving human subjects, human material, or human data, or involving animals, an ethics statement should be included Eg. The study was approved by XYZ Institution's Ethics Board, approval number 12345.

**Consent to publish**

If the abstract contains details relating to individual participants such as three or more identifiable pieces of information (age, gender, diagnosis, weight, height etc.), written informed consent for the publication of these details must be obtained from the participants. A statement to this effect should appear at the end of the abstract E.g. *Informed consent to publish has been obtained from this patient*. If the patient is deceased consent for publication should be obtained from the next of kin and if the patient is under 16 consent should be obtained from the parent or guardian.

Our full guidelines for consent statements can be found here:

<http://www.biomedcentral.com/about/editorialpolicies>.

**References (not mandatory for abstracts)**

1. Lastname A, Lastname B, Lastname C. Title of journal article. Journal Medline abbreviation. Year; Volume:first page-last page.
2. Lastname E. Title of book chapter. In: Lastname F, editors. Name of Book. Volume 2. 2nd edition. Place: Publisher; Year. p.first page-last page.
3. Chomczynski P, Sacchi N. Single-step method of RNA isolation by acid guanidinium thiocyanate-phenol-chloroform extraction. *Anal Biochem*. 1987; 162:156-159.